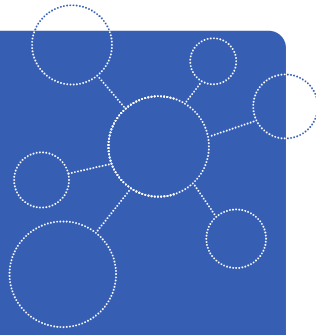


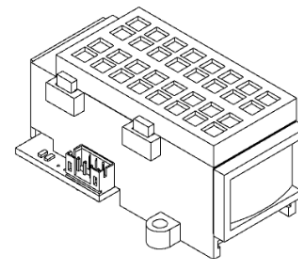
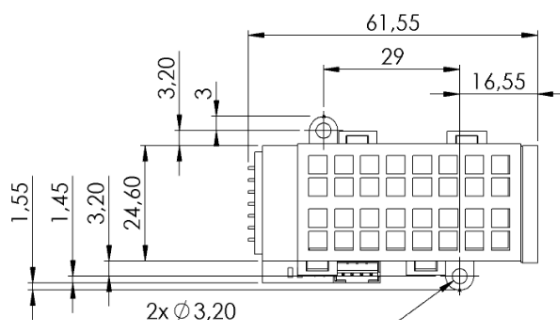
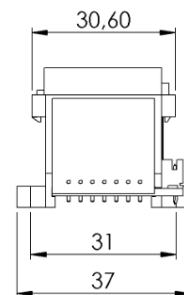
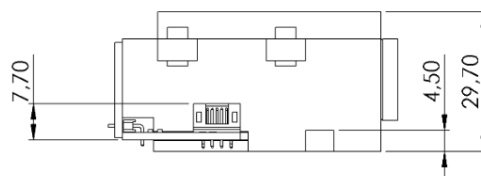
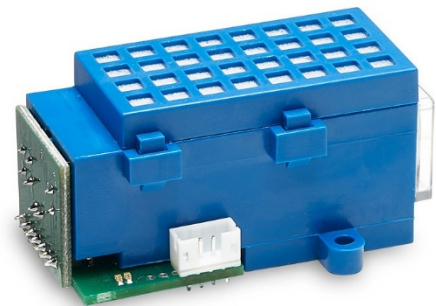
MADE IN GERMANY



BASIC^{EVO}

Infrared gas Sensor
 Propan C₃H₈
 1,7 Vol.-%
 smartGAS item number: B3-052176-00000

- Pre calibrated
- Low drift
- Gas entry by diffusion
- 3.3 - 6 V DC supply voltage
- Modbus ASCII or RTU
- Status indication by LED



Application examples

Biogas stations
 Production process
 Workplace security
 Research

Available equipment

Connect Interface
 Wall mount enclosure
 Calibration software
 Mounting equipment

Available design in support

Mechanical installation
 Data communication
 Also as complete Transmitter

General features

Measurement principle:	Non Dispersive Infra-Red (NDIR), dual wavelength
Measurement range:	0 ... 1.7 Vol.-% Full Scale (FS)
Gas supply:	by diffusion (atmospheric pressure)
Mounting dimensions:	62 mm x 37 mm x 30 mm (L x W x H)
Warm-up time:	< 2 minutes (start up time) < 11 minutes (fade in finished) < 30 minutes (full specification)

Measuring response*

Response time (t ₉₀):	appr. 60 s
Digital resolution:	0.001 Vol.-%
Detection limit (3 σ):	≤ 0.017 Vol.-%
Repeatability:	≤ ± 0.034 Vol.-%
Linearity error (straight line deviation):	≤ ± 0.034 Vol.-%
Long term stability (zero):	≤ ± 0.04 Vol.-% over 12 month period
Long term stability (span):	≤ ± 0.07 Vol.-% over 12 month period

Influence of T, P, flow rate, other*

Temp. dependence (zero):	≤ ± 0.002 Vol.-% per °C
Temp. dependence (span):	≤ ± 0.004 Vol.-% per °C
Pressure dependence:	+ 0.2 % of actual reading / hPa

Electrical parameters

Supply voltage	3.3 V ... 6.0 VDC
Supply current (peak):	< 500 mA @ 3.3 V, < 240 mA @ 5.0 V
Inrush current:	< 1000 mA
Average power consumption:	< 900 mW
Digital output signal:	Modbus ASCII / RTU via UART, autobaud, autoframe
Calibration:	zero and span by SW

Climatic conditions

Operating temperature:	-20 ... + 40 °C
Storage temperature:	-20 ... + 60 °C
Air pressure:	800 ... 1150 hPa
Ambient humidity:	0 ... 95 % relative humidity (not condensing)

* Typical values related to 1013 hPa, T_a = 22 °C, flow = 0.7 l / min for dry (not condensing) and clean sample gas.
Stated values exclude calibration gas tolerance.

All rights reserved. Any logos and/or product names are trademarks of smartGAS. The reproduction, transfer, distribution or storage of information contained in this brochure in any form without the prior written consent of smartGAS is strictly prohibited. All specifications – technical included – are subject to change without notice. Depending on the application, the target gas and the measurement range the technical data may differ. No liability is accepted for any consequential losses, injury or damage resulting from the use of this document or from any omissions or errors herein. The data is given for guidance only. It does not constitute a specification or an offer for sale.

For more information, please visit www.smartgas.eu or contact us at sales@smartgas.eu

Please consult smartGAS sales for parts specified with other temperature and measurement ranges. At first initiation and depending on application and ambient conditions recalibration is recommended. Recurring cycles of recalibration are recommended.