

# FLIR TrafiCam Series

## Vehicle presence sensor

The TrafiCam series of vehicle presence sensors combines a CMOS camera and video detector in one. The series includes two products:

- TrafiCam: vehicle presence sensor
- TrafiCam x-stream: vehicle presence sensor and data collector with video streaming (MJPEG, MPEG-4 or H.264)

Both the TrafiCam and TrafiCam x-stream sensors are used for detection and monitoring of moving and stationary vehicles at signalized intersections. Via detection outputs or via IP protocol, vehicle presence information is transmitted to the traffic controller so that signal timing can be adjusted dynamically. This way, vehicle waiting time at traffic lights is reduced and traffic flows are optimized. The smart TrafiCam sensors are a cost-effective and reliable alternative to inductive loops.

### DIRECT VISUAL VERIFICATION OF PRESENCE ZONES

The TrafiCam series allows you to exactly position and verify the vehicle presence detection zones. Since these zones are displayed on a video image, you can easily reposition them in case of changing traffic situations.

### MULTIPLE & DIRECTION SENSITIVE VEHICLE DETECTION ZONES

TrafiCam and TrafiCam x-stream detect vehicles, day and night. This allows vehicle presence detection over different lanes. The TrafiCam series has detection zones indicating presence of vehicles moving in a specific direction.

### EASY INSTALLATION AND FAST CONFIGURATION

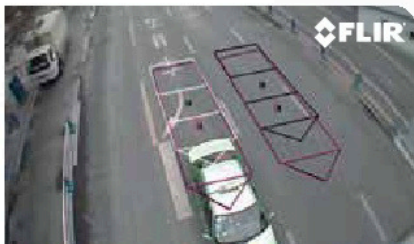
TrafiCam is easy to install. You can simply mount it on the existing infrastructure.

### KEY FUNCTIONALITIES:

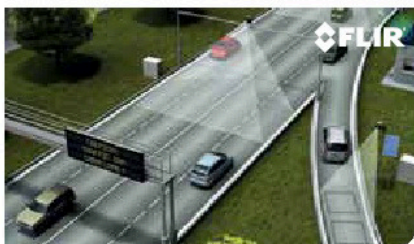
- Vehicle presence detection at intersections
- Data collection, queue detection and traffic flow monitoring (TrafiCam x-stream only)

### KEY BENEFITS:

- ALL-IN-ONE SENSOR (CAMERA + VIDEO DETECTION)
- NON-INTRUSIVE, ABOVE-GROUND INSTALLATION
- REAL-TIME VERIFICATION AND MONITORING
- REAL-TIME TRAFFIC VIEW



Presence zones can be implemented and changed on a video image.



TrafiCam x-stream is an above-ground sensor providing a wide range of traffic data on up to 4 lanes.

## Imaging Specifications

System Overview	TrafiCam	TrafiCam x-stream
Detection Functionalities	Vehicle presence	Vehicle presence + data
# Detection Zones	8	24 presence zones 4 data zones
# Detection Outputs	4 via interface 1TI 8 via interface 4TI ETH 8 via 4TI ETH EDGE & 4/Os xp (*)	3 for ETH versions, direct or via optional ETH interface 16 for BPL versions, via TI x-stream BPL
<b>CAMERA</b>		
Resolution	640x480 pixels (VGA)	640x480 pixels (VGA)
Frame rate	20 FPS	25 FPS
Lens Types	Wide Angle	Narrow Angle
Focal Distance	2.1mm	6.0mm
Detection Distance	0-25m	15-75m
Mounting Height	3,5-12m	3,5-12m
CMOS type	1/4" black & white	1/4" color
Compression	JPEG	MJPEG, MPEG-4, H.264 (dual stream)
<b>Housing</b>		
Material	Aluminum	Aluminum
Dimensions	Vertically mounted 45 cm x 16 cm x 12 cm, Horizontally mounted 41 cm x 18 cm x 12 cm	Vertically mounted 45 cm x 16 cm x 12 cm, Horizontally mounted 41 cm x 18 cm x 12 cm
Sunshield	Optional	Optional
<b>Power, outputs, communication</b>		
Operating voltage	12-26VAC/DC	12-32VAC, 12-42VDC
IP Address	No	Yes
Communication PC - Sensor	Via interface	Via interface or direct (ETH)
Interface(s)	1TI, 4TI ETH, 4TI ETH EDGE (*)	TI x-stream for BPL sensors, optional ETH interface for ETH sensors
Outputs (Pmax=300mW, Imax=50mA, Umax=48VDC)	4 for 1TI 8 for 4TI ETH 4 for 4TI ETH EDGE (**)	16 for BPL (PN 10-6085) 3 for ETH (PN 10-6075)
PC Tool for Setup	TrafiCam PC Tool	TrafiCam Configuration Tool (TCT)
<b>Regulatory, environmental</b>		
EMC	Electromagnetic Compatibility 2004/108/EG	Electromagnetic Compatibility 2004/108/EG
FCC	FCC Part 15 Class A	FCC Part 15 Class A
Temperature Range	-34°C to +80°C	-34°C to +80°C
Materials	Weatherproof (UV-resistant)	Weatherproof (UV-resistant)
Protection grade	IP67	Housing = IP68, connectors = IP67

(\*) US only  
(\*\*) 4 extra outputs via 4/Os xp expansion board

### Part numbers

TrafiCam	Lens type	Focal distance	Detection distance
10-8090A	Wide	2.1 mm	0 - 25 m
10-8091A	Narrow	6.0 mm	15 - 75 m
TrafiCam x-stream	Lens type	Focal distance	Detection distance
10-7000	Wide BPL	2.1 mm	0 - 25 m
10-7008	Wide ETH	6.0 mm	0 - 25 m
10-7001	Narrow BPL	2.1 mm	15 - 75 m
10-7009	Narrow ETH	6.0 mm	15 - 75 m

Interfaces	
10-8078	1TI
10-8077	4TI ETH
10-8083	4TI ETH EDGE (*) (**)
10-8085	TI x-stream BPL
10-8075	ETH interface
10-4870	4/Os xp

**PORTLAND**  
Corporate Headquarters  
FLIR Systems, Inc.  
27700 SW Parkway Ave.  
Wilsonville, OR 97070  
USA  
PH: +1 866.477.3687

**BELGIUM**  
FLIR Systems Trading  
Belgium BVBA  
Luxemburgstraat 2  
2321 Meer  
Belgium  
PH: +32 (0) 3665 5100

**FLIR ITS**  
Hospitaalweg 1B  
B-8510 Marke  
Belgium  
PH: +32 (0)56 37 22 00

www.flir.com  
NASDAQ: FLIR

Specifications are subject to change without notice.  
©Copyright 2014, FLIR Systems, Inc. All other brand and product names  
are trademarks of their respective owners. The images displayed may not  
be representative of the actual resolution of the camera shown. Images for  
illustrative purposes only. [Created 10/14]

**SWEDEN**  
FLIR Systems AB  
Antennvägen 6,  
PO Box 7376  
SE-187 66 Täby  
Sweden  
PH: +46 (0)8 753 25 00

**SANTA BARBARA**  
FLIR Systems, Inc.  
70 Castilian Drive.  
Goleta, CA 93117  
USA  
Ph: +1 866.477.3687

**UK**  
FLIR Systems UK  
2 Kings Hill Avenue  
Kings Hill  
West Malling - Kent  
ME19 4AQ  
United Kingdom  
PH: +44 (0)1732 220 011

www.flir.com



代理店  
株式会社アイ・アール・システム

〒206-0041 東京都多摩市愛宕4-6-20 HP: <http://www.irsystem.com>  
TEL: 042-400-0373 FAX: 042-400-0374 メール: [office@irsystem.com](mailto:office@irsystem.com)



The World's Sixth Sense™