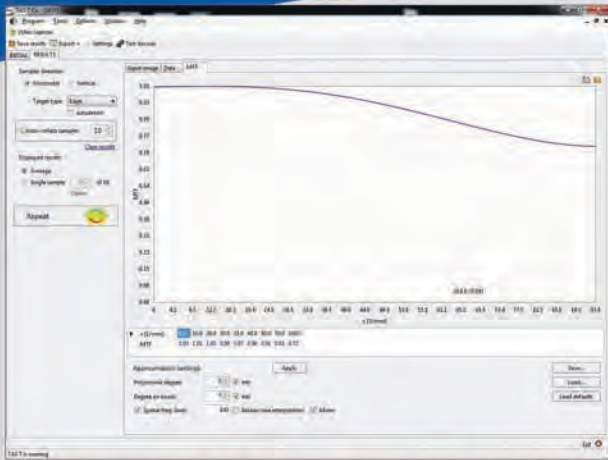




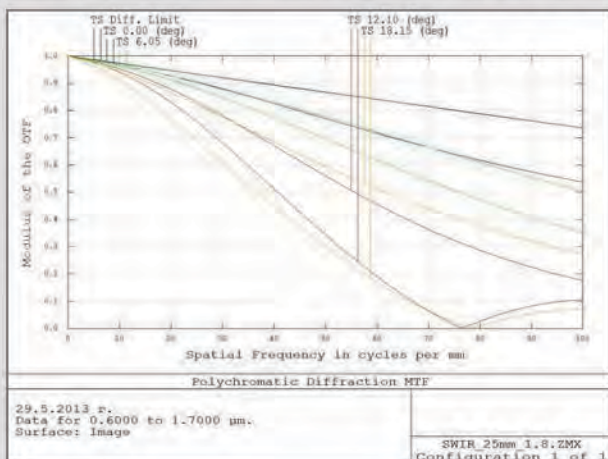
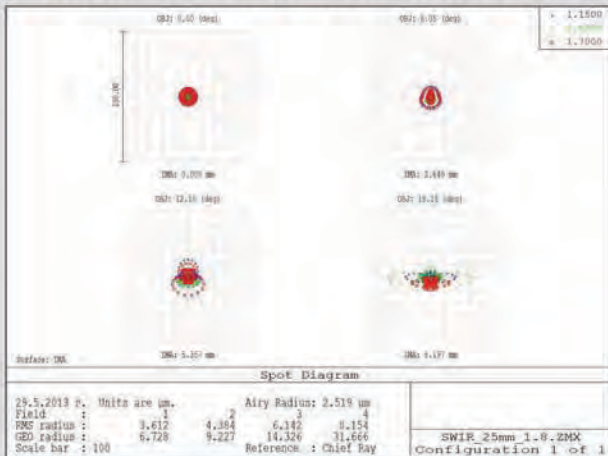
SWIRECON 25

HIGH PERFORMANCE SHORT
WAVE INFRARED LENS
SWIR $f=25 \times 1.8$ AT



Swirecon 25x1,8 AT On Axis MTF 600 – 1700 nm (REAL MEASUREMENT)

LENS PERFORMANCE GRAPHICS



LENS SPECIFICATION

Focal Length: 25 mm
F/#: 1.8
Waveband: 600 nm - 1700 nm
Athermalized: -46°C to +65°C (and above)

Field of View (for 640x512 20 microns pitch FPA) 36.3 degrees diagonally

Image diagonal: 16.4 mm
Distortion: < 0.2 %
Transmission: > 85 %
Focus: Manual
Mount: C-Mount
Dimensions: $\Phi 32 \times 43.5$ mm
Weight: 92 g



EXAMPLE OF COMPATIBLE SENSORS

Sensors format	Pitch dimension in microns					
	30	25	20	15	12.5	10
320x240	X	X	X			
320x256	X	X	X			
640x512			X	X	X	X