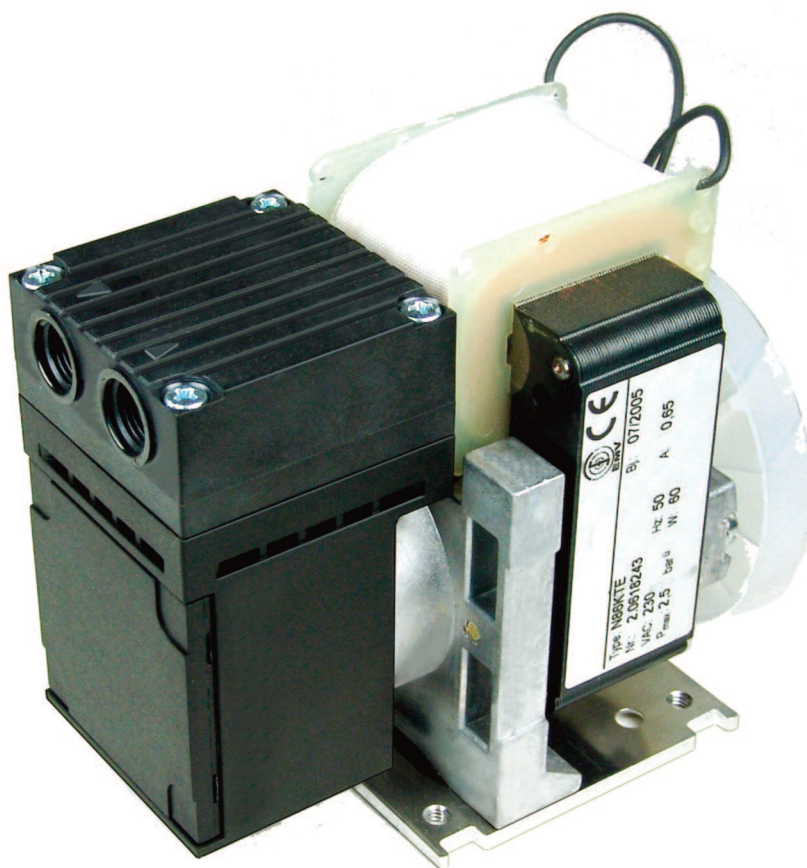




JSP-86 / JSP-86 KTE / JSP-89 Compact Sample Gas Pumps

JCT
Analysentechnik



Gas Sampling
Probes

Heated Sample
Lines

Sample Gas
Coolers

Condensate
Treatment

Accessories

Gas Conditioning
Systems

Sample Gas
Converters

APPLICATION

- For extractive gas analysis
- For emission and process monitoring
- For continuous pumping of sample gas
- For installation in gas analysis systems
- Suitable for mobile devices
- Applicable for long tube and hose distances

BENEFITS

- Reliable continuous sample gas delivery
- No alteration of sample gas
- High suction power
- Easy mounting and integration in gas analysis systems
- Low noise and vibration operation
- Long life time
- Maintenance free construction
- Corrosion resistant
- Gas tight

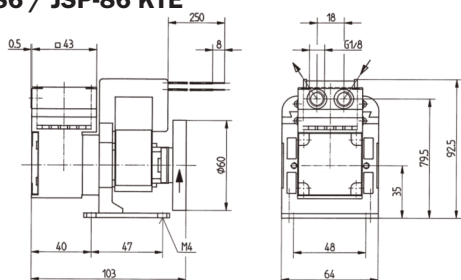
FEATURES

- For continuous operation
- Compact light weight design
- Robust construction
- Pump capacity 3 / 5,5 / 9,5 NI/min
- Membrane pump
- Corrosion resistant materials: EPDM, Ryton®, Viton®, PTFE coated
- Ball bearing brushless shaded pole motor
- Oil free gas path
- Operation in any installation position
- Suitable fittings, mounting bracket and vibration absorbers as accessories

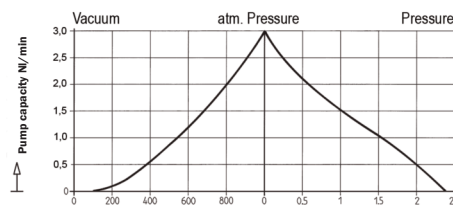
TECHNICAL DATA

Model	JSP-86	JSP-86 KTE	JSP-89
Description	Continuously working compact sample gas pump		
Operation			
Pump capacity at atm. pressure	3 NI/min	5,5 NI/min	9,5 NI/min
Ambient temperature	+5° to 40°C		
Operating pressure max.	3,4 bara	3,5 bara	1,5 bara
End vacuum max.	0,10 bara	0,16 bara	0,10 bara
Construction			
Dimensions over all (B x H x T)	64 x 92,5 x 103 mm	64 x 92,5 x 103 mm	64 x 95 x 117 mm
Weight	1,1 kg	1,1 kg	1,3 kg
Connections inlet / outlet	G 1/8" i		
Gas wetted materials	EPDM, Ryton®, Viton®	PTFE coated, Ryton®, Viton®	EPDM, Ryton®, Viton®
Protection class	IP00		
Electrics			
Power supply	115 VAC 60 Hz	230 VAC 50 Hz	230 VAC 50 Hz or 115 VAC 60 Hz
Power consumption	60 W		
On time	100 %		
Electrical connection	2 x 200 mm free strands 0,35 mm ² and 6,3 mm „Fast On“ earthing lead		

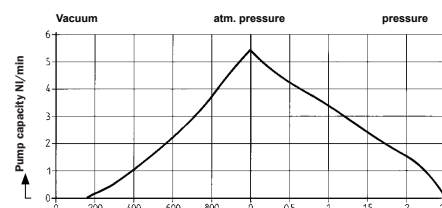
JSP-86 / JSP-86 KTE



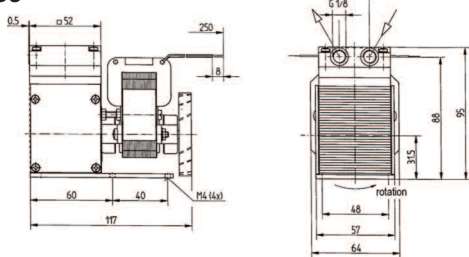
JSP-86



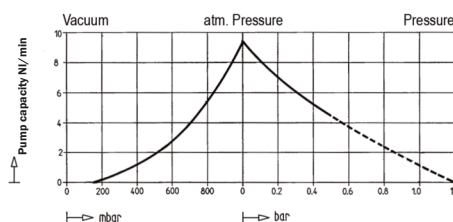
JSP-86 KTE



JSP-89



JSP-89

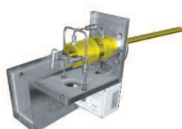


Dimensions in mm

ORDER CODES

Pump 230 VAC 50 Hz	Pump 115 VAC 60 Hz	Description	mbarg	barg
	K1233144	JSP-86 Membrane sample gas pump, 3,0 NI/min		
85.08620		JSP-86 KTE Membrane sample gas pump, 5,5 NI/min		
85.08920	K8533122	JSP-89 Membrane sample gas pump, 9,5 NI/min		

Gas Sampling Probes



Heated Sample Lines



Sample Gas Coolers



Gas Conditioning Systems



NOx Converter



and solutions for

