

# DRB-2

## Base mounting system

### FEATURES

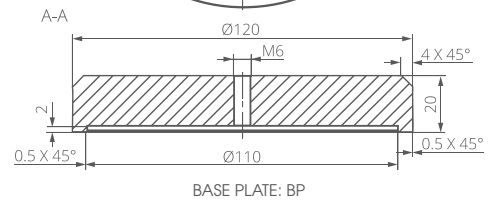
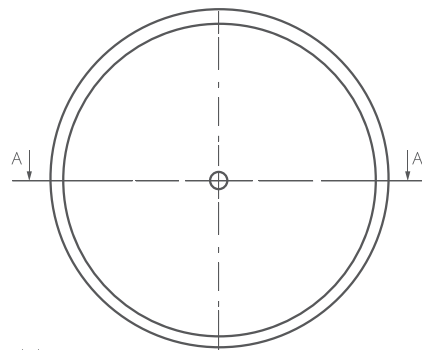
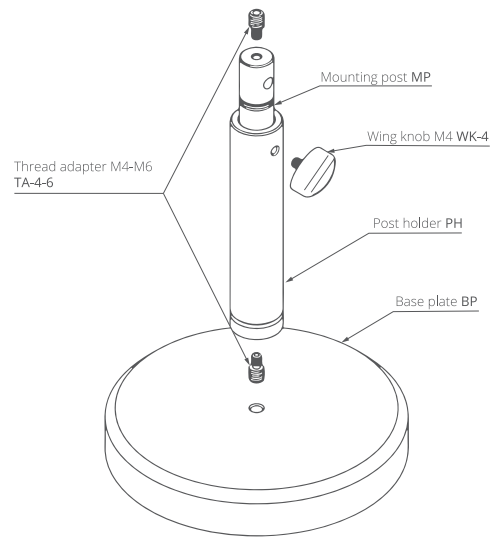
- Dedicated to VIGO detection modules with M4 mounting hole
- Adjustable height
- Compatible with M6 optical breadboards

### DRB-2 PARTS

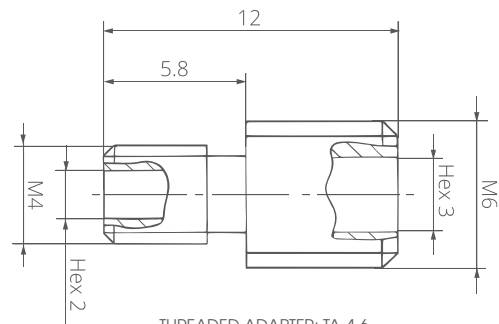
- Base plate: BP
  - Made of black, lacquered steel
  - Provides stable mechanical conditions for the mounting system
  - Weight: ~1756 g
- Mounting post: MP
  - Made of stainless steel
  - Equipped with two threaded adapters TA-4-6
  - Weight: ~115 g
- Post holder: PH
  - Made of black anodized aluminium
  - Equipped with wing knob WK-4
  - Weight: ~60 g

### COMPATIBLE ACCESSORIES

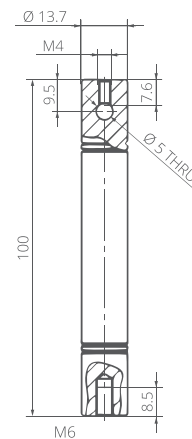
- **MH-1** module holder (p. 154)
- **DH-2** detector holder (p. 144)



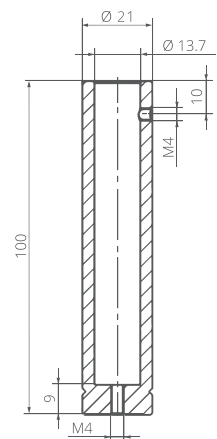
BASE PLATE: BP



THREADED ADAPTER: TA-4-6



MOUNTING POST: MP



POST HOLDER: PH