

FLIR TrafiCam Series

Vehicle presence sensor

The TrafiCam series of vehicle presence sensors combines a CMOS camera and video detector in one. The series includes two products:

- TrafiCam: vehicle presence sensor
- TrafiCam x-stream: vehicle presence sensor and data collector with video streaming (MJPEG, MPEG-4 or H.264)

Both the TrafiCam and TrafiCam x-stream sensors are used for detection and monitoring of moving and stationary vehicles at signalized intersections. Via detection outputs or via IP protocol, vehicle presence information is transmitted to the traffic controller so that signal timing can be adjusted dynamically. This way, vehicle waiting time at traffic lights is reduced and traffic flows are optimized. The smart TrafiCam sensors are a cost-effective and reliable alternative to inductive loops.

DIRECT VISUAL VERIFICATION OF PRESENCE ZONES

The TrafiCam series allows you to exactly position and verify the vehicle presence detection zones. Since these zones are displayed on a video image, you can easily reposition them in case of changing traffic situations.

MULTIPLE & DIRECTION SENSITIVE VEHICLE DETECTION ZONES

TrafiCam and TrafiCam x-stream detect vehicles, day and night. This allows vehicle presence detection over different lanes. The TrafiCam series has detection zones indicating presence of vehicles moving in a specific direction.

EASY INSTALLATION AND FAST CONFIGURATION

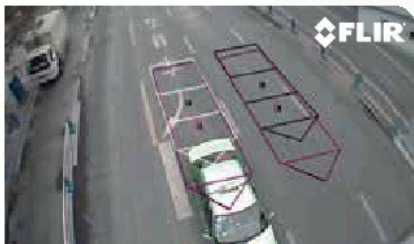
TrafiCam is easy to install. You can simply mount it on the existing infrastructure.

KEY FUNCTIONALITIES:

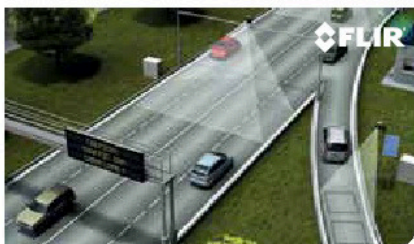
- Vehicle presence detection at intersections
- Data collection, queue detection and traffic flow monitoring (TrafiCam x-stream only)

KEY BENEFITS:

- ALL-IN-ONE SENSOR (CAMERA + VIDEO DETECTION)
- NON-INTRUSIVE, ABOVE-GROUND INSTALLATION
- REAL-TIME VERIFICATION AND MONITORING
- REAL-TIME TRAFFIC VIEW



Presence zones can be implemented and changed on a video image.



TrafiCam x-stream is an above-ground sensor providing a wide range of traffic data on up to 4 lanes.

Imaging Specifications

System Overview	TrafiCam	TrafiCam x-stream
Detection Functionalities	Vehicle presence	Vehicle presence + data
# Detection Zones	8	24 presence zones 4 data zones
# Detection Outputs	4 via interface 1TI 8 via interface 4TI ETH 8 via 4TI ETH EDGE & 4/Os xp (*)	3 for ETH versions, direct or via optional ETH interface 16 for BPL versions, via TI x-stream BPL
CAMERA		
Resolution	640x480 pixels (VGA)	640x480 pixels (VGA)
Frame rate	20 FPS	25 FPS
Lens Types	Wide Angle	Narrow Angle
Focal Distance	2.1mm	6.0mm
Detection Distance	0-25m	15-75m
Mounting Height	3,5-12m	3,5-12m
CMOS type	1/4" black & white	1/4" color
Compression	JPEG	MJPEG, MPEG-4, H.264 (dual stream)
Housing		
Material	Aluminum	Aluminum
Dimensions	Vertically mounted 45 cm x 16 cm x 12 cm, Horizontally mounted 41 cm x 18 cm x 12 cm	Vertically mounted 45 cm x 16 cm x 12 cm, Horizontally mounted 41 cm x 18 cm x 12 cm
Sunshield	Optional	Optional
Power, outputs, communication		
Operating voltage	12-26VAC/DC	12-32VAC, 12-42VDC
IP Address	No	Yes
Communication PC - Sensor	Via interface	Via interface or direct (ETH)
Interface(s)	1TI, 4TI ETH, 4TI ETH EDGE (*)	TI x-stream for BPL sensors, optional ETH interface for ETH sensors
Outputs (Pmax=300mW, Imax=50mA, Umax=48VDC)	4 for 1TI 8 for 4TI ETH 4 for 4TI ETH EDGE (**)	16 for BPL (PN 10-6085) 3 for ETH (PN 10-6075)
PC Tool for Setup	TrafiCam PC Tool	TrafiCam Configuration Tool (TCT)
Regulatory, environmental		
EMC	Electromagnetic Compatibility 2004/108/EG	Electromagnetic Compatibility 2004/108/EG
FCC	FCC Part 15 Class A	FCC Part 15 Class A
Temperature Range	-34°C to +80°C	-34°C to +80°C
Materials	Weatherproof (UV-resistant)	Weatherproof (UV-resistant)
Protection grade	IP67	Housing = IP68, connectors = IP67

(*) US only
(**) 4 extra outputs via 4/Os xp expansion board

Part numbers

TrafiCam	Lens type	Focal distance	Detection distance
10-8090A	Wide	2.1 mm	0 - 25 m
10-8091A	Narrow	6.0 mm	15 - 75 m
TrafiCam x-stream	Lens type	Focal distance	Detection distance
10-7000	Wide BPL	2.1 mm	0 - 25 m
10-7008	Wide ETH	6.0 mm	0 - 25 m
10-7001	Narrow BPL	2.1 mm	15 - 75 m
10-7009	Narrow ETH	6.0 mm	15 - 75 m

Interfaces	
10-8078	1TI
10-8077	4TI ETH
10-8083	4TI ETH EDGE (*) (**)
10-8085	TI x-stream BPL
10-8075	ETH interface
10-4870	4/Os xp

PORTLAND
Corporate Headquarters
FLIR Systems, Inc.
27700 SW Parkway Ave.
Wilsonville, OR 97070
USA
PH: +1 866.477.3687

BELGIUM
FLIR Systems Trading
Belgium BVBA
Luxemburgstraat 2
2321 Meer
Belgium
PH: +32 (0) 3665 5100

FLIR ITS
Hospitaalweg 1B
B-8510 Marke
Belgium
PH: +32 (0)56 37 22 00

www.flir.com
NASDAQ: FLIR

Specifications are subject to change without notice.
©Copyright 2014, FLIR Systems, Inc. All other brand and product names
are trademarks of their respective owners. The images displayed may not
be representative of the actual resolution of the camera shown. Images for
illustrative purposes only. [Created 10/14]

SWEDEN
FLIR Systems AB
Antennvägen 6,
PO Box 7376
SE-187 66 Täby
Sweden
PH: +46 (0)8 753 25 00

SANTA BARBARA
FLIR Systems, Inc.
70 Castilian Drive.
Goleta, CA 93117
USA
Ph: +1 866.477.3687

UK
FLIR Systems UK
2 Kings Hill Avenue
Kings Hill
West Malling - Kent
ME19 4AQ
United Kingdom
PH: +44 (0)1732 220 011

www.flir.com



代理店
株式会社アイ・アール・システム

〒206-0041 東京都多摩市愛宕4-6-20 HP: <http://www.irsystem.com>
TEL: 042-400-0373 FAX: 042-400-0374 メール: office@irsystem.com



The World's Sixth Sense™